

# VisualDOC Interface with TAItherm™

TAItherm plugin enables users to easily set up a TAItherm model in VisualDOC

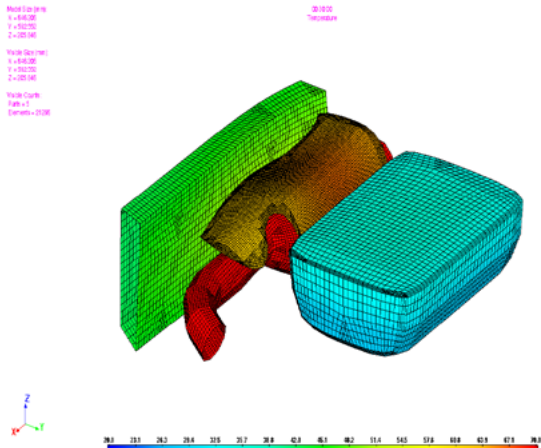
## Overview

- Seamlessly couple a TAItherm model with VisualDOC MDO options
- Supports all available VisualDOC modules like DOE, RSA, Reliability, and Optimization
- VisualDOC parses the TAItherm boundary conditions file to extract design variables
- Simulation results, exported in a CSV file, are automatically imported as responses inside VisualDOC
- Supports local and remote run for Windows and Linux OS and can be parallelized

## Optimization Case Study

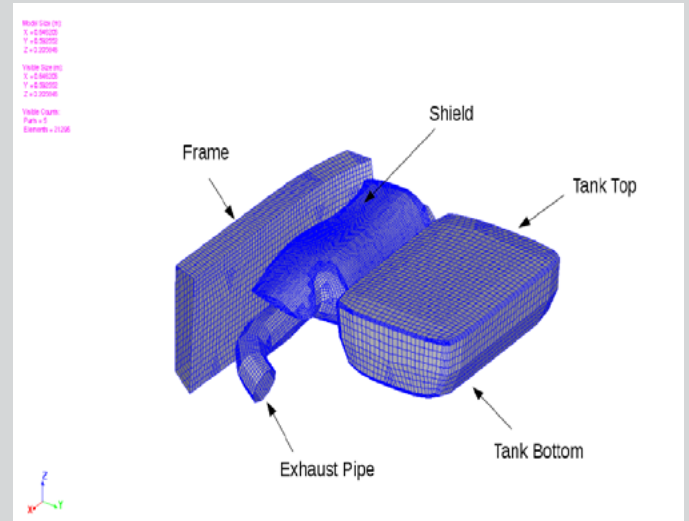
- Objective: Minimize maximum part temperatures for each time step
- Constraint: Mass
- Design variables: Part thickness

## Optimization Result: Temperature Plot

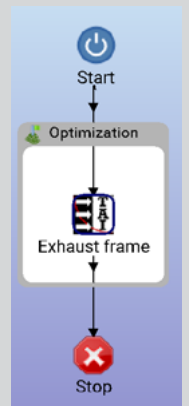
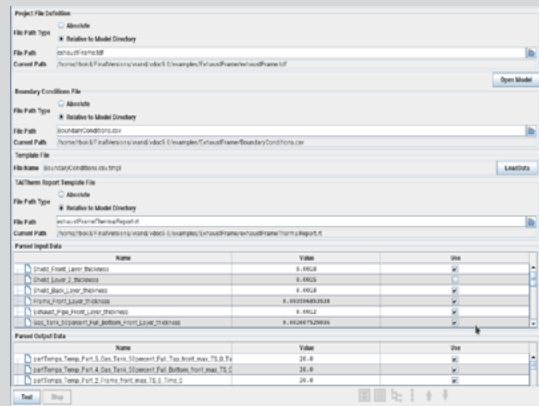


Optimum Temperature Profile

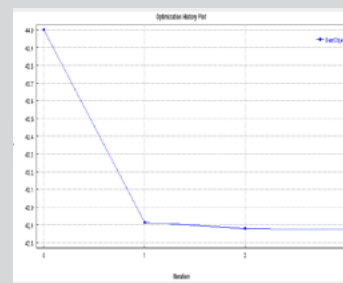
## TAItherm Exhaust Frame Model



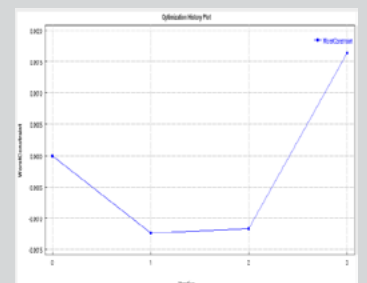
TAItherm Exhaust Frame Model



## VisualDOC Workflow and Data Exchange



Optimization History

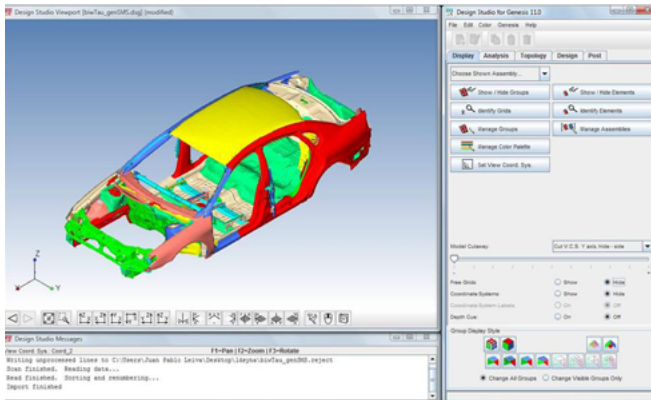


## GENESIS - Structural Analysis & Optimization

GENESIS is a fully integrated finite element analysis and design optimization software package. Analyses include static, normal modes, direct and modal frequency analysis, random response, heat transfer and system buckling. Design optimization is based on the advanced approximation concepts approach to find an optimum design efficiently and reliably. Actual optimization is performed by the well established DOT and BIGDOT optimizers, also from VR&D. Design capabilities include: topology, shape, sizing, topography, topometry, and freeform optimization. Typically the optimization requires less than ten detailed finite element analyses, even for large and complex design tasks.

### Design Studio for GENESIS

Design Studio for GENESIS is a design oriented pre- and post-processor graphical interface for the GENESIS program. It features built-in and easy-to-use trails for setting up the optimization problem and running GENESIS from the interface. It also supports post-processing of the optimization results with contour plots, deformed plots, animations, etc.



Design Studio for GENESIS

## GSAM - GENESIS Structural Optimization for ANSYS Mechanical

GENESIS Structural Optimization for ANSYS Mechanical (GSAM) is an integrated extension that adds topology, topography, freeform, sizing, and topometry optimization to the ANSYS environment. Designers benefit by automatically generating innovative designs in a reliable, robust and easy-to-use interface. The extension allows the user to setup the structural optimization problem, optimize, post-process, export optimized geometry all within the ANSYS environment.

### GTAM - GENESIS Topology for ANSYS Mechanical

GENESIS Topology for ANSYS Mechanical (GTAM) is an integrated extension that adds topology optimization to the ANSYS environment. GTAM is a subset of GSAM. GTAM is limited to topology only.

## About Vanderplaats Research & Development, Inc.

Vanderplaats Research & Development, Inc. (VR&D) mission is to provide the best technology, software, staff of experts and client support in the optimization world. The company was founded by Dr. Garret Vanderplaats, one of the best known experts in the optimization world. VR&D has a track record for consistently delivering a competitive advantage to customers in a broad range of industries.

**Headquarters:** 1767 S. 8th St. Suite 200 Colorado Springs, CO 80905  
Ph. 719-473-4611 Fax. 719-473-4638 Email: sales@vrand.com www.vrand.com

**Michigan office:** 41700 Gardenbrook Suite 115 Novi, MI 48375  
Ph. 248-596-1611 Fax. 248-596-1911

## VisualDOC - Multidiscipline Design Optimization

VisualDOC is a software system that simplifies adding optimization to almost any design task. It uses a powerful intuitive graphical interface, along with gradient based and non-gradient based optimization, response surface (RS) approximate optimization, and design of experiments (DOE) methods. VisualDOC interfaces easily to your own code or third-party analysis program. For example, VisualDOC can be easily coupled with ANSYS Workbench.

### DOT - Design Optimization Tools

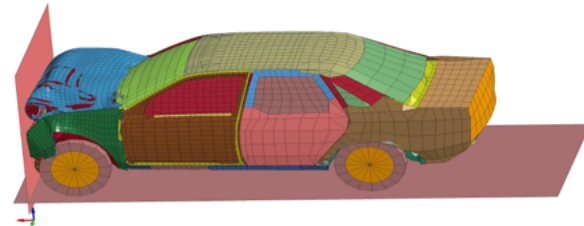
DOT is a general purpose numerical optimization software library which can be used to solve a wide variety of nonlinear optimization problems. If you require only an optimization engine to incorporate into your design software, DOT will serve that purpose.

### BIGDOT

BIGDOT is intended to solve very large, nonlinear, constrained problems where gradient information is available, and function and gradient evaluation is efficient. BIGDOT is capable of solving continuous, discrete/integer or mixed variable problems. Problems in excess of three million variables have been solved by BIGDOT.

### ESLDYNA - Optimization Software for LS-DYNA

ESLDYNA is based on the Equivalent Static Loads (ESL) method to perform optimization based on a nonlinear finite element analysis with GENESIS as the structural optimization program. ESLDYNA takes advantage of the capability of GENESIS, a linear structural optimization program, to solve large scale optimization problems based on the responses from a LSdyna nonlinear finite element analysis. It also helps to significantly reduce the design time by identifying high performance designs with five to ten nonlinear analyses.



Topometry Optimization to Minimize Firewall Intrusion

### SMS Fast Eigensolver

The SMS eigensolver may be added to existing NASTRAN installations to offer significant performance advantages over the default method when a large number of eigenmodes are required for a system with many degrees of freedom. Benchmark studies and user experience show 2-10 times speedup. SMS may also be embedded into your product/software.

